

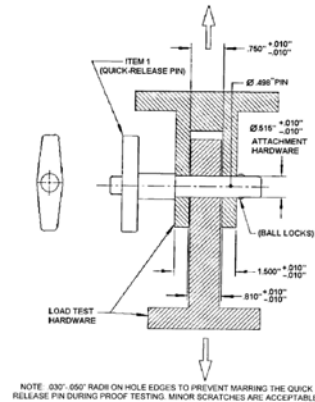


Standards:
NASM 1138A2S16D

Material Type:
QUICK RELEASE PINS

Type of Testing:
DOUBLE SHEAR, TENSILE

DOUBLE SHEAR TENSILE FIXTURE FOR 0.5" PINS



Model No.
NASM.01338.10

Specimen Size or Difference Between Fixtures
0.498" pin diameter with 0.515" pin hole

Construction
High strength heat treated steel

Temperature
-120 to 250°F (-85 to 122°C)

Fixture:	Mounting	1"-14 threaded couplings
	Capacity	6,500 lbs
	Weight	6 lbs
	Dimensions	1.5" x 1.5" x 7.5"
	Standard	NASM 1338-16

QUOTE

Model No. NASM.01338.10 - Custom Double Shear Tensile Fixture for 0.5" Pins

The fixture consists of a "Y" shaped loading yoke, shearing plate with loading holes in the yoke and shear plate sections will be able to handle a 1/2" diameter pin. The fixture comes with 1"-14 threaded couplings for mounting purposes. The fixture will be manufactured with the dimensions listed in the sketch provided by the customer and is constructed from high strength heat treated steel.

ACCESSORIES

There are no accessories available for this fixture

SPARE PARTS

Please contact us for spare or replacement parts

COMMON SIZE ADAPTERS

Lower Mounting with Platen: 1"-14 Female Coupling

Model No. M03S36 - 1.25" Male Clevis to 1"-14 Threaded Stud

Model No. S42S36 - 1.25"-12 to 1"-14 Threaded Step Stud

Model No. S48S36 - 1.5"-12 to 1"-14 Threaded Step Stud

Model No. S60S36 - 2"-12 to 1"-14 Threaded Step Stud

Model No. LN36 - 1"-14 Threaded Locking Nut with Knurled OD