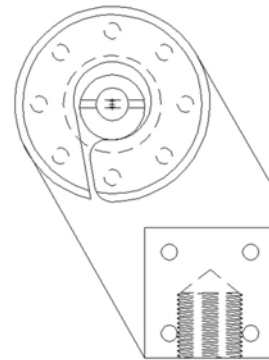


Material Type:  
RIBBON, TAPE, PLASTIC, FABRIC

Type of Testing:  
GRIPS, TENSILE, MECHANICAL

## 2,000 LBS 1" WIDE RIBBON TENSILE GRIPS



Model No.  
GRIP.60100.10

Specimen Size or Difference Between Fixtures  
Up to 1" wide

Construction  
High strength steel with finish

Temperature  
-120 to 250°F (-85 to 122°C)

Specimen:	Thickness	0.10"
	Length	Minimum 24" long
Fixture:	Mounting	1"-14 threaded couplings
	Capacity	1,000 lbs
	Weight	4 lbs
	Dimensions	5.4" x 4" x 2.25"

## **QUOTE**

Model No. GRIP.60100.10 - 2,000 lbs Roller Type Grip for Tissue, Ribbons, Plastics and Fabrics

The loading cylinder is 3" in diameter and can handle a specimen up to 1" wide and a minimum of 24" long. The ribbon is clamped (smooth and flat) within the cylinder and wound around the drum to tighten against itself. Supplied with 1"-14 threaded couplings for mounting purposes and can handle a capacity of 1,000 lbs. The grips have a temperature range of -120 to 250°F (-85 to 122°C) and are manufactured from high strength steel.

## **ACCESSORIES**

No accessories available for this fixture

## **SPARE PARTS**

Please contact us for spare or replacement parts

## **COMMON SIZE ADAPTERS**

### **Upper and Lower Mounting: 1"-14 Female Threaded Coupling**

Model No. M03S36 - 1.25" Male Clevis to 1"-14 Threaded Stud

Model No. S42S36 - 1.25"-12 to 1"-14 Threaded Step Stud

Model No. S48S36 - 1.5"-12 to 1"-14 Threaded Step Stud

Model No. S60S36 - 2"-12 to 1"-14 Threaded Step Stud

Model No. LN36 - 1"-14 Threaded Locking Nut with Knurled OD