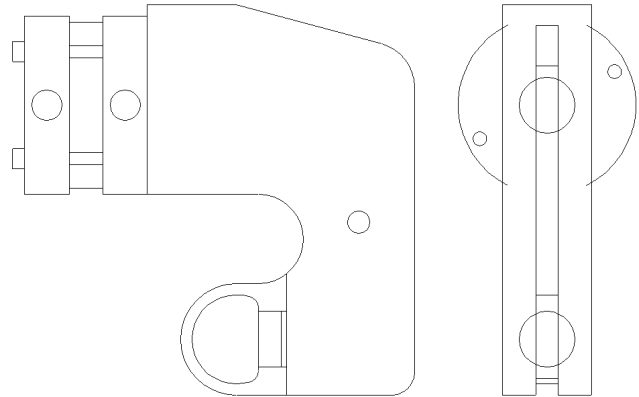


PNEUMATIC ACTION CORD AND YARN GRIPS



Model No.

GRIP.30100.10
GRIP.30200.10

Specimen Size or Difference Between Fixtures

200 lbs capacity
500 lbs capacity

Construction

Aluminum
Aluminum

Temperature

-20 to 120°F (-29 to 49°C)
-20 to 120°F (-29 to 49°C)

Specimen:	Diameter	Up to 3/8"
	Length	Any length
Fixture:	Mounting	1/2"-20 studs and locking nuts
	Weight	(.30) 5 lbs, (.10) 7 lbs
	Dimensions	4.75" x 1" x 3"

QUOTE

Model No. GRIP.30100.10 - 200 Pound Pneumatic Action Cord and Yarn Grips

A set of 2 grips that will accept cord, yarn and cable with diameters up to 3/8". The material is secured by a flat faced gripper which is actuated by a a mini three way air valve pneumatic cylinder. The grips are supplied with a 1/2"-20 threaded stud and locking nuts to fit your testing machine. The grips are constructed of high strength aircraft aluminum with a capacity of 200 lbs.

Model No. GRIP.30200.10 - 500 Pound Pneumatic Action Cord and Yarn Grips

A set of 2 grips that will accept cord, yarn and cable with diameters up to 3/8". The material is secured by a flat faced gripper which is actuated by a a mini three way air valve pneumatic cylinder. The grips are supplied with a 1/2"-20 threaded stud and locking nuts to fit your testing machine. The grips are constructed of high strength aircraft aluminum with a capacity of 500 lbs.

ACCESSORIES

No accessories available for this fixture

SPARE PARTS

Please contact us for spare or replacement parts

COMMON SIZE ADAPTERS

Upper and Lower Mounting: 1/2"-20 Stud and Locking Nut

Model No. M01C21 - 1/2" Male Clevis to 1/2"-20 Coupling

Model No. M02C21 - 5/8" Male Clevis to 1/2"-20 Coupling

Model No. M03C21 - 1.25" Male Clevis to 1/2"-20 Coupling

Model No. M12C21 - 12mm Male Clevis to 1/2"-20 Coupling

Model No. S36C21 - 1"-14 Stud to 1/2"-20 Coupling