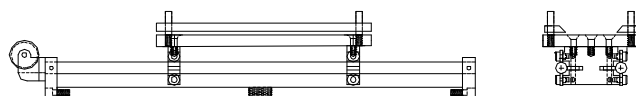
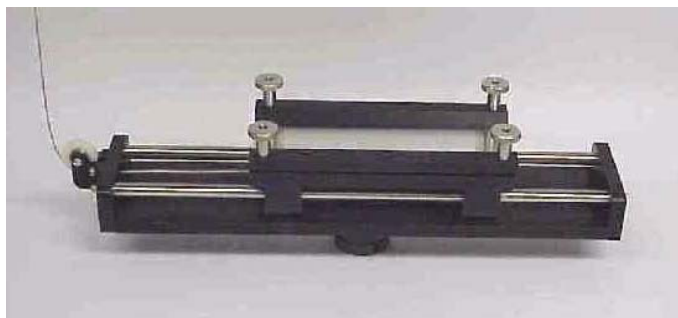


90° CONSTANT ANGLE PEEL FIXTURE FOR 2" x 9" SPECIMENS WITH 5 ALUMINUM Q-PANEL BONDING PLATES



Specimen:	Width	Up to 2.0"
	Thickness	Up to 0.5"
	Length	Up to 9"
Fixture:	Construction	Aluminum and stainless steel
	Temperature	-20 to 120°F (-29 to 49°C)
	Mounting	1/2"-20 coupling top, 1.25" Type D male clevis bottom
	Capacity	100 lbs (444.8 N)
	Weight	10 lbs approximately
	Dimensions	Assembled 18" x 4.25" x 5"
	Standard	Manufactured in accordance with PSTC, ASTM B571, ASTM D2681, D3330(F), and ASTM D6862.

Model No. ASTM.D6862.10 - 90° Constant Angle Peel Fixture (2" by 9" Test Panel) The fixture consists of a horizontal aluminum mounting plate with two specimen clamping bars held down by knurled nuts. The specimen plate moves along twin linear rails by four low friction precision bearings. The rails are secured to the base of the test machine by an aluminum mounting bracket that has a 1" -14 threaded coupling. One end of the fixture supports a nylon wheel which is used to guide a thin vinyl coated steel wire. The steel wire is used for low force peel tests which require the sled to be driven by the cross head. The wire attaches to the sled and upper cross head. The fixture is also supplied with 5 Q-panel aluminum aluminum peel testing panels. Constructed in accordance with PSTC, ASTM B571, ASTM D2681, D3330(F), and ASTM D6862 standards. Fixture dimensions: Width = 4.25" (2.125" edge to centerline), Length = 18" Height = 5". Includes (1) upper grip constructed of aluminum with a protective finish. Grip has a 200 lb capacity and 1/2" -20 threaded coupling.

MODEL NO. ASTM.D6862.10

ASTM, 90°, PEEL, RESISTANCE, ADHESIVE, PSTC,

ACCESSORIES

Upper and lower fixture attachment is supplied with 1" -14 female coupling. (Common adapter sizes include:)

Model No. M03S36 - 1.25" Male Clevis (Type D) to 1" -14 Threaded Stud

Model No. S42S36 - 1.25" -12 to 1" -14 Threaded Step Stud

Model No. S48S36 - 1.5" -12 to 1" -14 Threaded Step Stud

Model No. S60S36 - 2" -12 to 1" -14 Threaded Step Stud

Model No. LN36 - Threaded Locking Nut with Knurled OD

SPARE PARTS

Contact us for spare or replacement parts

REFERENCE DOCUMENT AND TEST METHOD SCOPE:

<http://www.astm.org/Standards/D6862.htm>

ASTM D6862 - 11

Standard Test Method for 90 Degree Peel Resistance of Adhesives

1.1 This test method covers the determination of the resistance-to-peel strength of an adhesive bond between one rigid adherend and one flexible adherend when tested at an angle of approximately 90 degrees under specified conditions of preparation and testing.

1.2 A variation in thickness of the adherends will generally influence test values. For this reason, the thickness of the adherends used to make the test specimens shall be specified in the material specification. When no thickness is specified, the flexible adherend shall be 0.60 mm (0.025 in.) thick and the rigid adherend shall be 1.60 mm (0.060 in.) thick.

Note 1—A heavy fabric, such as canvas, has been used as a flexible adherend.

1.3 The values stated in SI units are to be regarded as the standard. The values given in parentheses are for information only.

1.4 This standard does not purport to address all of the safety concerns, if any, associated with its use. It is the responsibility of the user of this standard to establish appropriate safety and health practices and determine the applicability of regulatory limitations prior to use.

Extracted, with permission from D6862, Standard Test Method for 90 Degree Peel Resistance of Adhesives, copyright ASTM International, 100 Barr Harbor Drive, West Conshohocken, PA 19428. A copy of the complete standard may be purchased from ASTM International, www.astm.org.