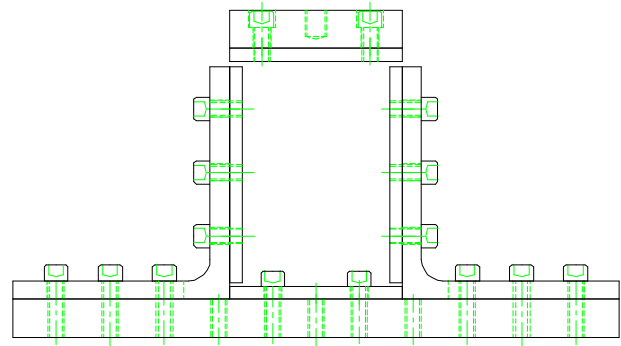
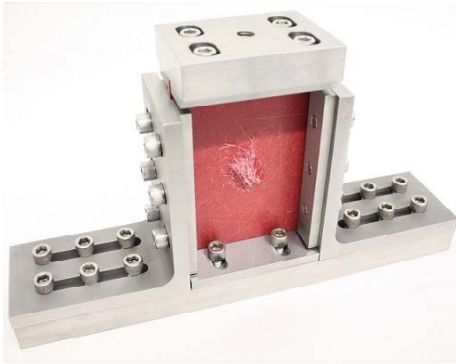


Standards:
AITM1-0010 - 05
ASTM D7137 - 17
BSS 7260 - 88
EN 6038-95

Material Type:
POLYMER, MATRIX, COMPOSITE

Type of Testing:
COMPRESSION

COMPRESSION AFTER IMPACT TEST FIXTURE



ASTM.D7137.10

Model No.	Specimen Size or Difference Between Fixtures	Construction	Temperature
AITM.10010.20	See below	Stainless steel	-240 to 600°F (-152 to 318°C)
ASTM.D7137.10	See below	Stainless steel	-240 to 600°F (-152 to 318°C)
BOEI.07260.22	See below	Stainless steel	-240 to 600°F (-152 to 318°C)
ENST.06038.20	See below	Stainless steel	-240 to 600°F (-152 to 318°C)

Specimen:	Width	4"
	Thickness	0.125 - 0.5"
	Length	6"
Fixture:	Mounting	Top: 1/2"-13 threaded coupling Bottom: platen (not included)
	Capacity	50,000 lbs (222 kN)
	Weight	35 lbs
	Dimensions	14" x 3" x 7.8"
	Standard	Manufactured in compliance with AITM1-0010, ASTM D7137, BSS 7260 and EN 6038

QUOTE

Model No. ASTM.D7137.10 - Compression After Impact Test Fixture

Accommodates specimens measuring 4" wide by 6" tall and from 0.125-0.5" thick. Supplied with 1/2"-13 threaded coupling for upper attachment to your test machine. Base of fixture sits on a compression platen (platen not included). Temperature range is -240 to 600°F (-152 to 318°C) and the fixture has a capacity of 50,000 lbs. Constructed from stainless steel and manufactured in compliance with AITM1-0010, ASTM D7137, BSS 7260 and EN 6038.

ACCESSORIES

Model No. ACC.D7137.1001 - Optional Gussets Welded on to ASTM.D7137.10

SPARE PARTS

Please contact us for spare or replacement parts

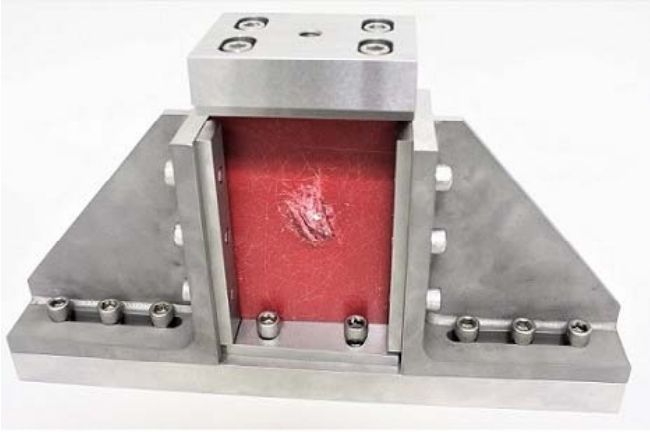
COMMON SIZE ADAPTERS

Upper and Lower Mounting: Platens

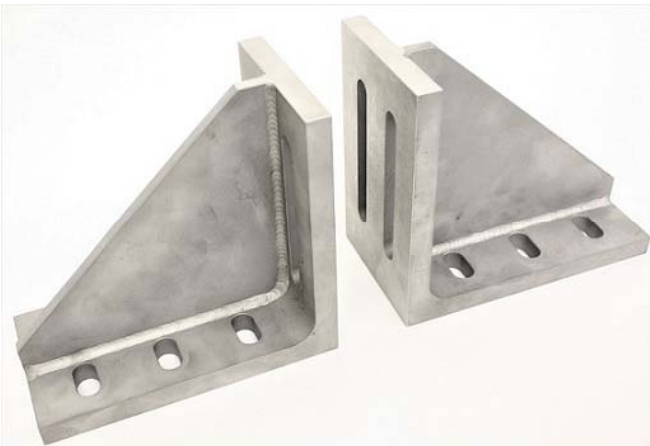
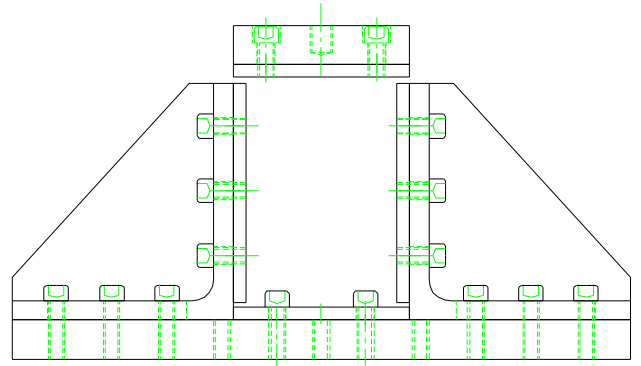
Model No. PLAT.RF061.10 - 6" Diameter Fixed Compression Platen

Model No. PLAT.SF061.10 - 6" Square Fixed Compression Platen

EXTRA PHOTOS:



ASTM.D7137.10 with Gussets



ACC.D7137.1001 - Optional Gussets