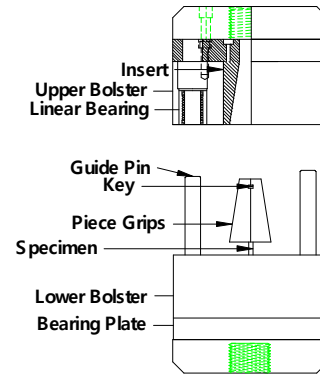


## IITRI COMPRESSION LOADING FIXTURE



**Model No.**

ASTM.D3410.20  
 ISOS.14126.20

**Specimen Size or Difference Between Fixtures**

Up to 1" wide, 0.6" thick and 5.5" length  
 Up to 1" wide, 0.6" thick and 5.5" length

**Construction**

Stainless steel  
 Stainless steel

**Temperature**

-240 to 600° (-152 to 318°C)  
 -240 to 600° (-152 to 318°C)

ASTM.D3410.25  
 ISOS.14126.25

Up to 2" wide and up to 0.6" thick  
 Up to 2" wide and up to 0.6" thick

Stainless steel  
 Stainless steel

-240 to 600° (-152 to 318°C)  
 -240 to 600° (-152 to 318°C)

Fixture:	Mounting	(.20) M30-2 couplings (.25) M48-2 couplings
	Capacity	60,000 lbs (266.9 kN)
	Weight	(.20) 80 lbs or (.25) 120 lbs approximately
	Dimensions	7" x 4" x 14"
	Standard	Manufactured in compliance with ASTM D3410 and ISO 14126

## **QUOTE**

Model No. ASTM.D3410.20 - IITRI Compression Loading Test Fixture for Up To 1" Wide Specimens

Accepts replaceable loading wedges for specimen thickness up to 0.6" and specimen widths up to 1". Supplied with one set of replaceable loading wedges for specimen thickness from 0.2" to 0.4" and specimen widths up to 1". Temperature range: -240 to 600° (-152 to 318°C). The fixture can handle 60,000 lbs capacity and comes with M30-2 threaded couplings. Constructed from stainless steel. Manufactured in compliance with ASTM D3410 and ISO 14126.

Model No. ASTM.D3410.25 - IITRI Compression Loading Test Fixture for Up To 2" Wide Specimens

Accommodates specimens up to 0.6" in thickness and 2" in width with replaceable wedges. Supplied with one set of replaceable loading wedges for specimen thickness from 0.2" to 0.4" and specimen widths up to 2" wide. Temperature range: -240 to 600° (-152 to 318°C). The fixture can handle 60,000 lbs capacity and comes with M48-2 threaded couplings. Constructed of stainless steel. Manufactured in compliance with ASTM D3410 and ISO 14126.

## **All Fixtures**

**Upper and Lower Bolster** - The lower bolster assembly consists of a main load block, two sets of hardened inserts and two guide rods. The upper bolster assembly consists of a main load block, two sets of hardened inserts and two high temperature liner bearings. The loading blocks are ground flat and parallel. The two vertical alignment rods are at different heights for easy alignment of the upper bolster.

**IITRI Compression Loading Grips** - The grip set includes two sets of matched halves. To ensure proper alignment and sometimes used for additional specimen support, keys are provided that fit into the keyways on the lower portion of the grip jaws. The loading surfaces are flame sprayed with a high friction material to reduce slippage.

**Specimen Alignment Jig** - Constructed from aluminum with a protective black anodized finish. Each fixture comes with an alignment jig for proper assembly of the specimen grip assembly. The jig consists of a tapered block with vertical sides and a 1/2" gage length spacer.

## **ACCESSORIES**

Model No. ACC.D3410.2001 - Wedges for 0 to 0.2" Thick and Up to 1" Wide Specimens

Model No. ACC.D3410.2002 - Wedges for 0.4 to 0.6" Thick and Up to 1" Wide Specimens

Model No. ACC.D3410.2501 - Wedges for 0 to 0.2" Thick and Up to 2" Wide Specimens

Model No. ACC.D3410.2502 - Wedges for 0.4 to 0.6" Thick and Up to 2" Wide Specimens

Model No. ACC.D3410.0002 - 12mm Gage Length Spacer Block for Alignment Jig

Model No. ACC.D3410.0003 - 25mm Gage Length Spacer Block for Alignment Jig

Model No. ACC.D3410.0004 - 1" Gage Length Spacer Block for Alignment Jig

Model No. ACC.D3410.2503 - Replace M30-2 Coupling Plates with M48-2 Coupling Plates

Model No. SFF.D3410.9910 - Composite Compression Specimen Fabrication Fixture (Video)

## **SPARE PARTS**

Model No. SPA.D3410.2001 - Wedges for 0.2" to 0.4" Thick and Up to 1" Wide Specimens

Model No. SPA.D3410.2002 - Replacement Specimen Alignment Jig

Model No. SPA.D3410.2501 - Wedges for 0.2" to 0.4" Thick and Up to 2" Wide Specimens

Model No. SPA.D3410.0001 - Replacement 0.5" Gage Length Spacer Block for Alignment Jig

## **COMMON SIZE ADAPTERS**

### **Lower and Upper Mounting: M30-2 Threaded Coupling**

Model No. M03MS31 - 1.25" Male Clevis to M30-2 Threaded Stud

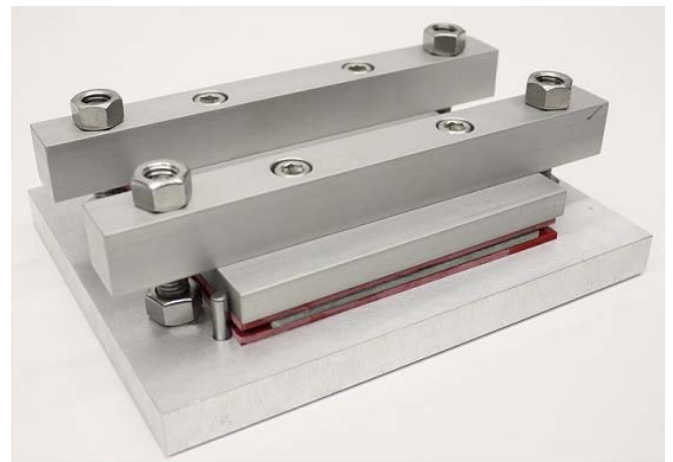
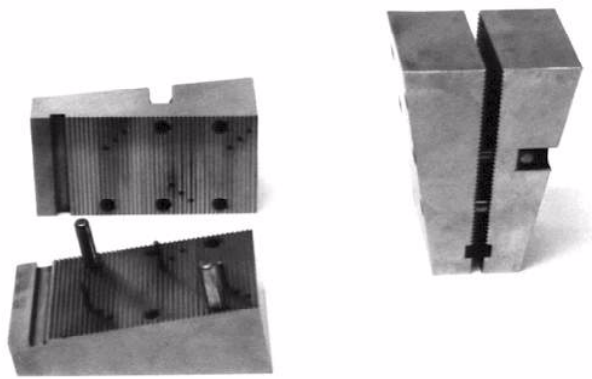
Model No. S42MS31 - 1.25"-12 to M30-2 Threaded Step Stud

Model No. S48MS31 - 1.5"-12 to M30-2 Threaded Step Stud

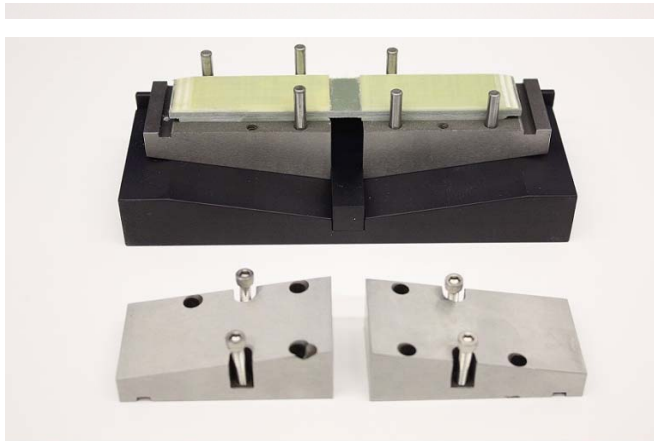
Model No. S60MS31 - 2"-12 to M30-2 Threaded Step Stud

Model No. LNM31 - M30-2 Threaded Locking Nut with Knurled OD

**EXTRA PHOTOS:**



**SFF.D3410.9910**



**SPA.D3410.2002**