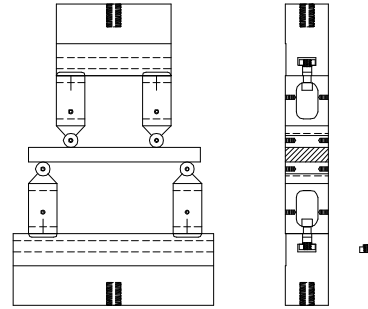


Short Beam Shear and Three Point Flexure Fixture High Capacity



<u>Model No.</u>	<u>Specimen Size or Difference Between Fixtures</u>
ASTM.D2344.17	Up to 1.5" width, 2" thick and 6" span
ISOS.14130.17	Up to 1.5" width, 2" thick and 6" span

<u>Construction</u>
High strength steel with a finish
High strength steel with a finish

<u>Temperature</u>
-120 to 250°F (-85 to 122°C)
-120 to 250°F (-85 to 122°C)

Specimen:	Support Spans	Any span from 0.125" to 6"
	Rollers	1/2" diameter
Fixture:	Mounting	M12-1.25 threaded couplings
	Capacity	5,000 lbs (22 kN)
	Weight	19 lbs
	Dimensions	Assembled - 2" x 7" x 8"
	Standard	Manufactured in compliance with ASTM D2344

QUOTE

Model No. ASTM.D2344.17- High Capacity Short Beam Shear And Three Point Flexure Fixture

Main Span: Infinitely adjustable from 1" to 6" (25.4mm to 410mm)
Four Point Span: Infinitely adjustable from 1" to 3" (25.4mm to 77mm)
Three Point Loading Head: 0.5" (12.7mm) diameter roller
Support Width: 1.5" (38mm)
Rollers: 0.5" (12.7mm) diameter
Roller width: 1.5"
Mounting: M12-1.25 threaded couplings
Maximum deflection at mid span: 1.75" (45mm)
Adaption: M12-1.25 threaded coupling ends (studs and locking nuts)
Overall Size: 2" deep by 7" wide by 9" tall
Capacity: 5,000 lbs (30 kN)
Construction: high strength steel with protective black oxide coating
Temperature Range: -120°F to 250°F (-85°C to 122°C)

ACCESSORIES

Model No. ACC.D2344.1701 - Extra Loading Nose - Please specify diameter.
Model No. ACC.D2344.1702 - Extra Set of (2) Supports - Please specify diameter.
Model No. ACC.D2344.1703 - Fixed Span 4 Point Loading Nose - Please specify diameter.
Model No. ACC.D2344.1704 - Extra Set of (4) Loading Pins

SPARE PARTS

Model No. SPA.D2344.1701- Replacement Bearings
Model No. SPA.D2344.1702- Replacement Shaft

COMMON SIZE ADAPTERS

Upper Mounting: 12mm Male Clevis

Model No. M12M01 - 12mm Male Clevis to 1/2" Male Clevis
Model No. M12M02 - 12mm Male Clevis to 5/8" Male Clevis
Model No. M12M03 - 12mm Male Clevis to 1.25" Male Clevis
Model No. M12S48 - 12mm Male Clevis to 1.5"-12 Threaded Stud
Model No. M12S42 - 12mm Male Clevis to 1.25"-12 Threaded Stud
Model No. M12S36 - 12mm Male Clevis to 1"-14 Threaded Stud

Lower Mounting: 1/2"-20 Female Coupling

Model No. M01S21 - 1/2" Male Clevis to 1/2" -20 Threaded Stud
Model No. M02S21 - 5/8" Male Clevis to 1/2" -20 Threaded Stud
Model No. M03S21 - 1.25" Male Clevis to 1/2" -20 Threaded Stud
Model No. M12S21 - 12mm Male Clevis to 1/2" -20 Threaded Stud
Model No. S36S21 - 1" -14 to 1/2" -20 Threaded Step Stud
Model No. LN21 - 1/2" -20 Threaded Locking Nut with Knurled OD

Material Testing Technology

420 Harvester Court - Wheeling, IL. 60090 - Ph: (847) 215-7448 Fax: (847) 215-7449 E-mail: sales@mtusa.net