

Standards:

ASTM C364 - 16

ASTM C481 - 99

MIL-STD-401B

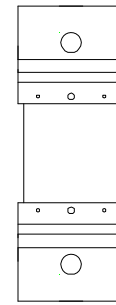
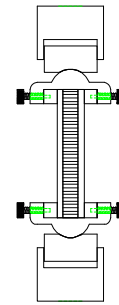
Material Type:

SANDWICH

Type of Testing:

COMPRESSION

ADJUSTABLE EDGEWISE COMPRESSION FIXTURE WITH 4" SELF-ALIGNING AND A NOTCHED SPHERICAL SEAT



Model No.

ASTM.C0364.10

ASTM.C0481.40

MILS.00401.40

Specimen Size or Difference Between Fixtures

Up to 4" wide, 2.25" thick, any length

Up to 4" wide, 2.25" thick, any length

Up to 4" wide, 2.25" thick, any length

Construction

High strength steel with finish

High strength steel with finish

High strength steel with finish

Temperature

-120 to 250°F (-85 to 122°C)

-120 to 250°F (-85 to 122°C)

-120 to 250°F (-85 to 122°C)

Fixture:

Mounting

(2) 1"-14 threaded couplings

Capacity

20,000 lbs (88.9 kN)

Weights

20 lbs approximately

Dimension

4" x 2" x 10"

Standard

Manufactured in compliance with ASTM C364, C481 and MIL-STD-401B

QUOTE

Model No. ASTM.C0364.10 - Adjustable Edgewise Compression Fixture for Sandwich Structures

The fixture includes 4" by 2" self-aligning V-notched upper and lower support platens with (2) 1"-14 threaded couplings and (1) set of replaceable inserts for specimen thicknesses up to 1". The fixture has a capacity of 20,000 lbs and a temperature range of -120 to 250°F (-85 to 122°C). Fixture is constructed from high strength steel with a protective black oxide finish. Manufactured in compliance with ASTM C364, C481 and MIL-STD-401B.

ACCESSORIES

Model No. ACC.C0364.1001 - Set of (2) Adjustable Inserts for Thicknesses Up to 2.25"

SPARE PARTS

Model No. SPA.C0364.1001 - Set of (2) Adjustable Inserts for Thicknesses Up to 1"

COMMON SIZE ADAPTERS

Upper and Lower Mounting: 1"-14 Threaded Coupling

Model No. M03S36 - 1.25" Male Clevis to 1"-14 Threaded Stud

Model No. S42S36 - 1.25"-12 to 1"-14 Threaded Step Stud

Model No. S48S36 - 1.5"-12 to 1"-14 Threaded Step Stud

Model No. S60S36 - 2"-12 to 1"-14 Threaded Step Stud

Model No. LN36 - 1"-14 Threaded Locking Nut with Knurled OD