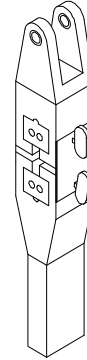


WOOD ADHESIVE SHEAR TEST FIXTURE



Specimen	Width	1.0"
	Thickness	0.125"
	Length	3.25"
Fixture	Construction	Stainless steel
	Temperature	-240 to 600°F (-152 to 318°C)
	Mounting	1"-14 UNF threaded couplings
	Capacity	5,000 lbs (25 kN)
	Weight	25 lbs approximately
	Dimensions	Assembled 2" x 5" x 14"
	Standard	Manufactured in accordance with ASTM D906.

Model No. ASTM.D0906.10 - Wood Adhesive Shear Test Fixture

The fixture consists of a guided screw action grip set. The lower grip is fixed to the test machine by mean of an adapter supplied with the fixture. The upper grip is attached by mean of a self-aligning swivel joint and adapter supplied. The grips will accommodate specimens up to 1" wide and up to 1/2" thick with tab material. The fixture is constructed of high strength steel with a protective black oxide finish in accordance with ASTM D906.

MODEL NO. ASTM.D0906.10

SHEAR TESTING

ACCESSORIES

Upper and lower fixture attachment is supplied with 1" -14 female coupling. (Common adapter sizes include:)

Model No. M03S36 - 1.25" Male Clevis (Type D) to 1" -14 Threaded Stud

Model No. S42S36 - 1.25" -12 to 1" -14 Threaded Step Stud

Model No. S48S36 - 1.5" -12 to 1" -14 Threaded Step Stud

Model No. S60S36 - 2" -12 to 1" -14 Threaded Step Stud

Model No. LN36 - Threaded Locking Nut with Knurled OD

SPARE PARTS

REFERENCE DOCUMENT AND TEST METHOD SCOPE:

Scope <http://www.astm.org/Standards/D906.htm>

ASTM D906-98(2011)

Standard Test Method for Strength Properties of Adhesives in Plywood Type Construction in Shear by Tension Loading

1.1 This test method covers the determination of the comparative shear strengths of adhesives in plywood-type construction, when tested on a standard specimen and under specified conditions of preparation, conditioning, and testing. This test method is intended to be applied only to adhesives used in bonding wood to wood.

1.2 The values stated in SI units are to be regarded as the standard. The values given in parentheses are provided for information purposes only.

1.3 This standard does not purport to address all of the safety concerns, if any, associated with its use. It is the responsibility of the user of this standard to establish appropriate safety and health practices and determine the applicability of regulatory limitations prior to use.

Extracted, with permission, from ASTM D906 Standard Test Method for Strength Properties of Adhesives in Plywood Type Construction in Shear by Tension Loading, 100 Barr Harbor Drive, West Conshohocken, PA 19482. A copy of the complete standard may be purchased from ASTM International, www.astm.org